

Stromal Cell-Derived Factor 1 α (SDF-1 α , CXCL12) labelled ^{15}N for Mass Spectrometry or NMR

Product Number: HM-162; HM-163

Expiration date: (depends on batch)

Batch number: (each batch has a specific tracking number)

Batch concentration: (depends on batch) after addition of (depends on batch) μL of distilled water.

Product Description:

Stromal Cell-Derived Factor 1 α (SDF-1 α) is a 8 kDa chemokine labelled with isotope ^{15}N .

This protein is suitable for Mass spectrometry and NMR studies.

This product corresponds to the human sequence and is produced in *E.coli*.

Reagent format:

SDF-1 α for Mass Spectrometry correspond to human sequence.

SDF-1 α for Mass Spectrometry is lyophilized from DPBS without Ca and Mg.

Storage: 2-8 $^{\circ}\text{C}$. The protein once resuspended can be stored frozen (-20 $^{\circ}\text{C}$).

This product is for research use only

```
MKPVSLSYRCPCRFFESHVARANVKHLKILNT
PNCALQIVARLKNNNRQVCIDPKLKWIQEYLE
KALNK
```

Fig. 1. SDF-1 α sequence

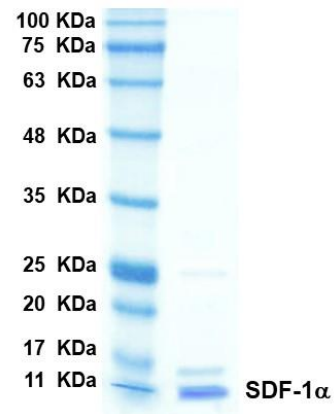


Fig. 2. SDS-PAGE with Coomassie Blue staining